

Ponedeljek: POPRAVA OCENJEVANJA

Danes v zvezek narediš popravo od kviza, ki si ga pisal prejšnji četrtek. Pri teorijskih nalogah si pomagaš z rešitvami, do katerih dostopaš preko e-pošte, s katero sem ti poslala točke in oceno. Za računске naloge prilagam pravilne postopke:

7.R. OCENJEVANJE

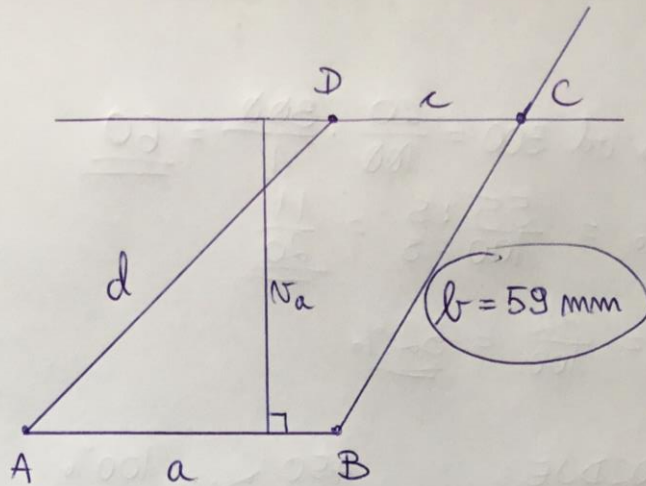
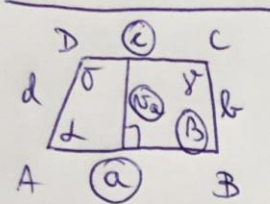
TRAPEZ:

$a = 5 \text{ cm}$

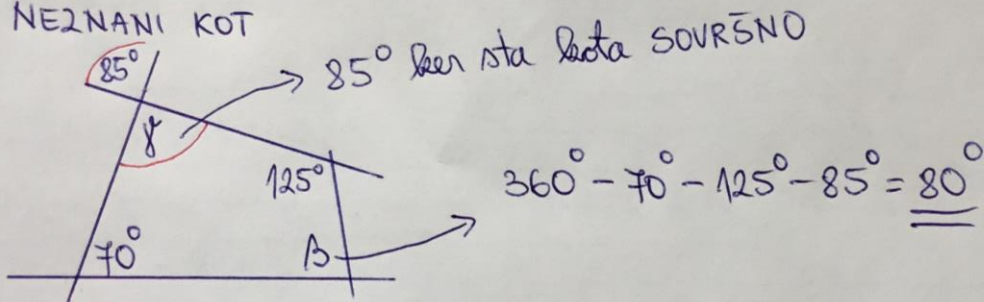
$c = 3 \text{ cm}$

$\beta = 120^\circ$

$N_a = 5 \text{ cm}$



NEZNANI KOT

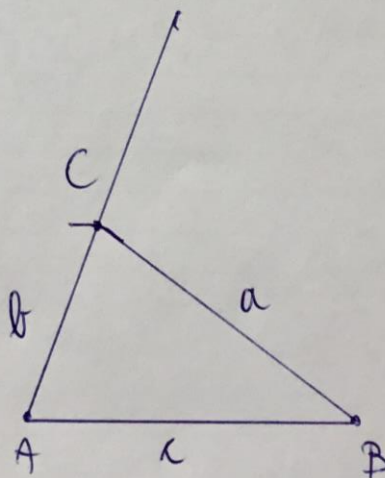
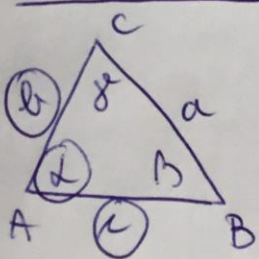


NAČRTAN Δ

$c = 5 \text{ cm}$

$\alpha = 70^\circ$

$b = 3 \text{ cm}$



$$20\% \text{ od } 300 = \frac{20}{100} \cdot \frac{300}{1} = \underline{\underline{60}}$$

$$55\% = \frac{55 : 5}{100 : 5} = \underline{\underline{\frac{11}{20}}}$$

$$\frac{8 \cdot 4}{25 \cdot 4} = \frac{32}{100} = \underline{\underline{32\%}}$$

6ROZDJE:

$$\begin{array}{r} 450 \quad \times \quad 100\% \\ 270 \quad \times \quad X \\ \hline \end{array} \quad \begin{array}{l} \\ \\ \\ \end{array} \quad \begin{array}{l} \\ \\ \\ \end{array}$$
$$X = \frac{270 \cdot 100}{450} = \underline{\underline{60\%}}$$

Nalog mi ne rabiš pošiljati saj se vidimo v sredo v šoli.